



144MHz FM TRANSCEIVER

IC-2200H

SELECTABLE GREEN OR AMBER DISPLAY



Stable 65W* output and new digital features

65W* of output power

A MOS-FET power amplifier provides 65W* of stable output power. A one piece, aluminum chassis helps to keep the transceiver cool and provides durable long-lasting construction. (* Depending on version.)

Optional digital unit, UT-115

The optional UT-115 provides digitally modulated and demodulated clear voice and data communication at 4.8kbps. Store up to 6 of your own callsigns, and up to 6 more from other stations. Or instead of recording a callsign, record any message of up to 20 characters. You may then make a call by sending one of your callsigns or a recorded CQ message. The digital callsign squelch allows you to choose an incoming call selected by the callsign. When connected to an external GPS receiver*, position information may be exchanged with other stations. (* NMEA 0183 output and RS-232C interface are required.)

Simple operation

The IC-2200H retains a familiar user interface to the IC-2100H. The large tuning dial provides easy access to active channels even without looking at the front panel. Secondary functions are easily recalled by holding the appropriate button.

Dynamic Memory Scan (DMS)

With a total of 207 alphanumeric memory channels, Icom's exclusive DMS system allows you to scan selected memory banks by simply adding and deleting bank links.

CTCSS and DTCS operation standard

The IC-2200H contains 50 CTCSS and 104x2 DTCS encode/decode plus tone scan functions. The "pocket beep" feature gives you an audible and visual indicator of an incoming call.

And more...

- 24 DTMF autodial memories
- DTMF code squelch and pager function with optional DTMF decoder, UT-108
- Weather channel with weather alert function (U.S.A. version only)
- FM narrow mode switchable (Depending on version)
- Selectable squelch delay
- Built-in 10dB squelch attenuator



HM-133V

Icom Inc.

SPECIFICATIONS

GENERAL

- Frequency range (Unit: MHz) :

Version	Transmit range	Receiver range
U.S.A.	144-148	118-174 ^{*1}
Europe	144-146	118-174 ^{*2}
Europe-1	144-146	144-146
Taiwan	144-146	144-146
Korea	144-146	144-146
Export	136-174 ^{*1}	118-174 ^{*1}

^{*1} Guaranteed range 144-148MHz

^{*2} Guaranteed range 144-146MHz

- Mode : FM, AM (Rx only)
- No. of memory channels : 207 (including 6 scan edges, and 1 call channel)
- Operating Temp. range : -10°C to +60°C;
+14°F to +140°F
- Frequency stability : ±10ppm (-10°C to +60°C)
- Power supply requirements: 13.8V DC ±15%
- Current drain (at 13.8V DC) :

Tx	High (65W)	15A
Rx	Max. audio	1.0A
	Standby	0.8A
- Antenna impedance : 50Ω (SO-239)
- Dimensions (W×H×D) : 140×40×146mm ;
(proj. not included) 5½×1½×5¾in
- Weight (approx.) : 1.25kg; 2.75lb

TRANSMITTER

- Output power (* approx.) : 65, 25*, 10*, 5*W selectable
Korea version 50, 25*, 10*, 5*W selectable
Taiwan version 24, 10*, 5*W selectable
- Maximum frequency deviation (wide/narrow) : ±5.0/±2.5kHz
- Spurious emissions : -70dBc typical.
- Microphone connector : 8-pin modular (600Ω)

Supplied accessories

- Remote control microphone, HM-133V
- Microphone hanger* (* Depending on version)
- Mobile mounting bracket kit
- DC power cable, OPC-1132
- Spare fuse

RECEIVER

- Receive system : Double-conversion superheterodyne
- Intermediate frequencies: 1st 21.7MHz
2nd 450kHz
- Sensitivity (at 12dB SINAD): 0.133μV typical
- Squelch sensitivity : 0.100μV typical (threshold)
- Selectivity :

Wide	More than 6kHz at -6dB Less than 14kHz at -60dB
Narrow	More than 3kHz at -6dB Less than 9kHz at -55dB
- Spurious and image rejection: More than 60dB
- Audio output power : More than 2.4W at 10%
(at 13.8V DC) distortion with an 8Ω load
- External speaker connector: 3-conductor 3.5 (d) mm (½"/8Ω)

All stated specifications are subject to change without notice or obligation.

OPTIONS

■ MICROPHONE ACCESSORIES

- **HM-133V** REMOTE CONTROL MICROPHONE
Remote control microphone with keypad backlighting. Same as supplied.
- **HM-118N** HAND MICROPHONE
- **HM-118TN/TAN** DTMF MICROPHONE
DTMF microphone with keypad backlighting.
- **OPC-440/OPC-647** MIC EXTENSION CABLES
OPC-440: 5m (16.4ft); OPC-647: 2.5m (8.2ft)
- **OPC-589** MIC ADAPTER CABLE
Allows you to connect a regular 8-pin microphone.

■ EXTERNAL SPEAKER

- **SP-10** EXTERNAL SPEAKER
- **OPC-441** SPEAKER EXTENSION CABLE: 5.0m (16.4ft)

■ INTERNAL UNITS

- **UT-108** DTMF DECODER UNIT
Provides DTMF decode capability with code squelch and pager operation.
- **UT-115** DIGITAL UNIT
Provides digital voice and data capability at 4.8kbps (Voice 2.4kbps + Data 2.4kbps).

■ OTHER ACCESSORIES

- **OPC-1132/OPC-347** DC POWER CABLES
OPC-1132: 3m (9.8ft); OPC-347: 7m (22.9ft)
- **MB-17A** MOBILE MOUNTING BRACKET
One-touch mounting bracket.

■ CLONING CABLES AND SOFTWARE

- **CS-2200H** CLONING SOFTWARE
+ **OPC-478/OPC-478U** CLONING CABLES
For quick and easy programming of memories, etc.
- **OPC-474** CLONING CABLE (between transceivers)

HM-133V



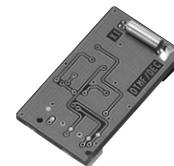
HM-118N

HM-118TN
HM-118TAN

SP-10



UT-108



UT-115



Les spécifications et informations données dans ce document peuvent être modifiées sans préavis.

ICOM FRANCE

Zac de la Plaine - 1, Rue Brindejonc des Moulinais
BP 5804 - 31505 TOULOUSE CEDEX
Tél : 05 61 36 03 03 - Fax : 05 61 36 03 00
WEB ICOM : <http://www.icom-france.com>
E-mail : icom@icom-france.com



Agence Côte d'Azur

Port Inland locaux N°112 et 113
701 avenue de Fontmichel - 06210 MANDELIEU
Tél : 04 92 19 68 00 - Fax : 04 92 19 68 01

CACHET REVENDEUR