


ICOM

VHF/UHF DUAL BAND TRANSCEIVER

IC-E92D

D-STAR:
Expanding the Technical Frontier!

GPS

Offers position reporting.
(With optional GPS speaker-microphone)

D-STAR

Includes DV mode digital voice
and low-speed data.

Waterproof

Equivalent to IPX7 protection.
(1 meter depth for 30 minutes)

Photo includes optional GPS speaker-microphone, HM-175GPS.

D-STAR

**Take It Outdoors!
Tough, Waterproof Con**

Rugged Waterproof Protection

The IC-E92D and HM-175GPS have superior waterproof protection equivalent to IPX7 (1m depth underwater for 30 minutes). The aluminum diecast chassis and gasket-sealed housing provide performance you can count on in harsh outdoor environments; when hiking, mountain biking, touring and for alpine activities.



VHF/UHF DUAL BAND
TRANSCEIVER

IC-E92D

Optional GPS Speaker-microphone

Used with the GPS speaker-microphone, HM-175GPS, the IC-E92D shows your position data on the display and offers automatic position reporting in DV mode. The IC-E92D shows the direction to a received D-STAR station or to a stored position with a compass-like display pointer. In addition, the GPS-A mode assists in easy D-PRS system operation.

GPS application examples

Touring with GPS

Even if you separate from your group, the radio shows the distance and direction to help you to re-join them.



Hiking with GPS

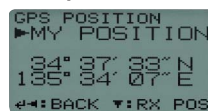
When you find a nice viewpoint, you can send the location to your friends.

Meeting with GPS

Exchanging position information with someone else helps you get together.



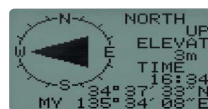
Examples of GPS functions



My (own) position information



RX (received station) position information

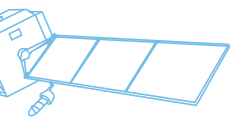


Compass information



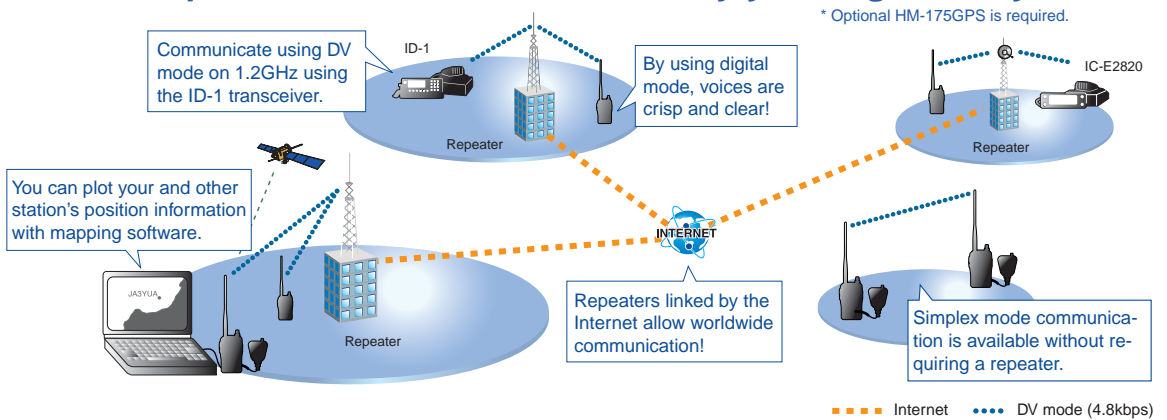
Direction and distance to RX station





**With the IC-E92D, exchanging position information* is easy!
D-STAR repeaters use the Internet to carry your signals anywhere!**

* Optional HM-175GPS is required.



struction!

Feature-rich Functions

Wideband receiver with dualwatch capability

The IC-E92D has dualwatch receiver capability, allowing you to receive* on two bands simultaneously (including the same band). By pushing and holding the [Main/Dual] button, you can easily turn dualwatch on and off, while a single press toggles the active VFO channels (A band/B band).

* See specifications for receive range coverage.

5 Watts (typical) output

Icom's original wideband PA circuit and supplied lithium-ion battery pack provides 5W (typ.) output power on both VHF and UHF bands. The supplied BP-256 provides up to 6/5.5 hours* of operating time. When you don't need full power operation, you can reduce output power to 2.5/0.5/0.1W (typ.) to reduce battery consumption.

Output power	High (5W typ.)	Mid (2.5W typ.)	Low (0.5W typ.)	S-Low (0.1W typ.)
VHF	6 hrs.	8.5 hrs.	14.5 hrs.	19 hrs.
UHF	5.5 hrs.	7.5 hrs.	14.5 hrs.	19 hrs.

* VHF/UHF single mode, Tx high: Rx: Stand-by duty ratio= 1: 1: 8

Simple bandscope

Spectrum activity is displayed on the screen and audio is heard while sweeping. The bandscope is useful for finding new or interfering signals.



Simple bandscope example

Built-in voice recorder function

The built-in voice recorder* records an incoming call for up to 30-seconds (approx.), (or 15 sec. x 2 tracks, 10 sec. x 3 tracks). For automated outgoing calls, you can pre-record up to 10 seconds of your callsign and/or CQ message in the IC-E92D's voice memory

(* Available in DV mode only)

Convenient Operation

Large dot-matrix Display

Using a large full dot-matrix display (37.8x20 mm; 1 1/2x2 5/32 in), the IC-E92D clearly shows two-line frequency settings, alphanumeric channel name, bandscope, received message and position information, etc. You can change the display setting to show frequency or memory name in the center of the display. In addition, automatic LCD and keypad backlighting provides bright illumination for night time operation.



Memory name large setting

One touch reply button

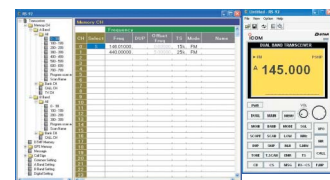
The one-touch reply [CALL RX->CS] button memorizes the received callsign(s) with a single touch. This function allows you to respond to the calling station without hassle. In addition, up to 20 received callsigns are stored in a received call history.

Keypad navigation

The four cursor direction buttons on the keypad give you quick and intuitive access to many settings. The dual volume/channel knob provides convenient channel selection and volume control.

Optional PC remote control capability

When connected to a PC via RS-232C, most functions of the IC-E92D can be controlled from the PC with the optional RS-92 software. In DV mode operation, you can send and receive short messages of 20 characters (max.) on the PC.



Other features

- Total of 1304 memory channels
- External DC power jack (10-16V DC acceptable)
- 10 channel DTMF memory (16-digit)
- Squelch disable function to monitor a weak signal
- Built-in CTCSS/DTCS tone encoder and decoder (FM mode)
- Auto power save, power off and power on
- 26 memory banks with selected bank and bank link scanning
- 10dB (approx) built-in attenuator
- 1750Hz tone for repeater access

SPECIFICATIONS

GENERAL

• Frequency coverage and mode: (Unit: MHz)

Version	Transmit	Receive (Working range)	Mode
Europe	144-146, 430-440	A band: 0.495-999.990 B band: 118-174, 350-470	FM/WFM*/AM* FM/FM-NAM*/DV

* Receive only.

- Memory channels : 1304 channels (including 100 program scan edges and 4 call channels)
- Useable temp. range: -20°C to +60°C
- Frequency stability : ±2.5ppm (-20°C to +60°C)
- Digital Tx speed : 4.8kbps
- Voice coding speed : 2.4kbps
- Power supply : 7.4V DC (with BP-256)
External DC power : 10-16V DC
- Current drain (at 7.4V DC):
Tx High (VHF/UHF) 1.8/2.1A typ.
Rx Power save(Duty= 1:4)/Rated output/Stand-by
FM (Single) 38mA/150mA/65mA typ.
FM/FM (Dual) 43mA/180mA/90mA typ.
FM/DV (Dual) 50mA/220mA/130mA typ.
DV (Single) 47mA/200mA/110mA typ.
- Tuning steps (kHz) : 5*, 6.25*, 8.33*, 9*, 10, 12.5, 15, 20, 25, 30, 50, 100, 125, 200
* Not available on all bands or modes.
- Antenna impedance : 50Ω (SMA)
- Dimensions (W×H×D) : 59×112×34.2 mm (projections not included)
- Weight (approx.) : 325g (with antenna and BP-256)

TRANSMITTER

- Output power : High 5W typ. Mid 2.5W typ.
Low 0.5W typ. S-low 0.1W typ.
- Spurious emissions : Less than -60dBc (High, Mid)
- Max. freq. deviation : ±5.0/2.5kHz (FM wide/narrow)
- Ext. MIC impedance : 2kΩ

RECEIVER

- Intermediate frequency :
A band (1st/2nd) 61.65MHz/450kHz (Except WFM)
WFM (1st/2nd/3rd) 59.25MHz/13.35MHz/1.95MHz
B band (1st/2nd) 46.35MHz/450kHz
- Sensitivity (typical, except spurious points) :
FM (at 12dB SINAD, 3.5kHz DEV)
1.625- 29.995MHz 0.4µV 30.000- 75.995MHz 0.25µV
76.000-117.995MHz 0.25µV 118.000-173.995MHz 0.18µV
174.000-259.995MHz 0.32µV 260.000-349.995MHz 0.32µV
350.000-469.995MHz 0.22µV 470.000-599.995MHz 0.32µV
600.000-999.995MHz 0.56µV
WFM (at 12dB SINAD, 52.5kHz DEV)
76.000-108.000MHz 1µV 175.000-221.995MHz 1.8µV
470.000-770.000MHz 2.5µV
AM (at 10dB S/N, 30% Mod.) 0.495- 4.995MHz 1.3µV
5.000- 29.995MHz 0.56µV 118.000-137.000MHz 0.5µV
222.000-246.995MHz 0.79µV 247.000-329.995MHz 1µV
DV (at BER 1%, 4.8kbps)
VHF (Ham band) 0.22µV UHF (Ham band) 0.22µV

- Selectivity :
AM/FM Wide : More than 50dB
FM-Narrow, DV : More than 45dB
WFM : More than 300kHz/-3dB
Less than 700kHz/-20dB
- Spurious and image rejection :
VHF (Ham band) : More than 60dB
UHF (Ham band) : More than 50dB (IF more than 60dB)
- Spurious radiation : Less than -57dBm
- Audio output power : More than 200mW at 10% distortion (7.4V DC) with an 8Ω load
- External speaker impedance : 8Ω

Supplied accessories (*depending on version)
● Battery pack (BP-256) ● Wall charger* (BC-167D)
● Antenna (FA-S270C) ● Belt clip (MB-111) ● Hand strap

All stated specifications are subject to change without notice or obligation.

OPTIONS

Some options may not be available in some countries. Please ask your dealer for details.

BATTERY PACK AND CASE



BP-256 BP-257

BP-256 7.4V/1620mAh Li-Ion BATTERY PACK
Provides 6/5.5 hours* operating time (approx.). (* Typical operation at VHF/UHF FM single mode with Tx (Hi): Rx: standby=1:1:8)
BP-257 BATTERY CASE for AA (LR6)×2 alkaline cells.
Output power: 0.1W typ. BP-257 is not waterproof.

BC-177 DESKTOP CHARGER



Rapidly charges battery pack BP-256. Charging time (approx.): 2.5 hours. AC adapter is supplied with the BC-177.

BC-167D WALL CHARGER



Charges the BP-256 in 6 hours (approx.). Same as supplied with some versions.

POWER SUPPLY CABLES



CP-19R : Cigarette lighter cable with DC-DC converter. 10-16V DC required.
OPC-254L : For use with an external power supply. 10-14V DC required for high power output.
CP-12L : Cigarette lighter cable is also available.

SPEAKER-MICROPHONES



HM-174 HM-175GPS

HM-174 : Waterproof speaker microphone. Equivalent to IPX7.
HM-175GPS : Waterproof speaker microphone with GPS receiver. Equivalent to IPX7.
HM-75A, HM-131, HM-153 and HM-166 speaker microphones are also available with the OPC-1797 plug adapter cable.

REMOTE CONTROL SOFTWARE AND CONNECTION CABLE



RS-92 : Provides remote control capability from a PC. OPC-1799 is included.
OPC-1799 : RS-232C type PC connection cable.

OPC-1797 PLUG ADAPTER CABLE



MIC/SP plug adapter. For use of the HM-75A, HM-131, HM-153, HM-166, HS-85, OPC-474 and SP-13.

LC-168 CARRYING CASE



Helps protect the transceiver from scratches, etc.

AD-92SMA ANTENNA CONNECTOR ADAPTER

Allows you to connect a BNC-type antenna.

HS-85 HEADSET
Allows you hands-free operation. Includes VOX, PTT, "one-touch PTT" with time out timer (TOT). OPC-1797 is required.

MB-111 BELT CLIP
Same as supplied.

OPC-474 CLONING CABLE
Used for handheld-to-handheld data cloning. Two OPC-1797s are required.

SP-13 EARPHONE
Provides clear audio in noisy environments. OPC-1797 is required.

Icom, Icom Inc. and the Icom logo are registered trademarks of Icom Incorporated (Japan) in the United States, the United Kingdom, Germany, France, Spain, Russia and/or other countries. All other trademarks are the properties of their respective holders.

Les spécifications et informations données dans ce document peuvent être modifiées sans préavis.

ICOM FRANCE
Zac de la Plaine - 1, Rue Brindejonc des Moulinais
BP 45804 - 31505 TOULOUSE CEDEX 5
Tél : 05 61 36 03 03 - Fax : 05 61 36 03 00
WEB ICOM : <http://www.icom-france.com>
E-mail : icom@icom-france.com



CACHET REVENDEUR

