

Contour Shuttle Device Control Panel



Table of Contents

1	Introduction to Shuttle Devices	1
1.1	Installing Shuttle Device Software.....	2
1.1.1	System Requirements.....	3
1.1.2	Installation Procedure.....	3
2	Shuttle Device Control Panel	4
2.1	Control Panel Overview	4
2.2	Opening the Shuttle Device Control Panel.....	5
2.3	Control Panel Components	5
2.3.1	Settings Management Section	6
2.3.1.1	Target Application Menu	6
2.3.1.2	Options Button	6
2.3.2	Device Events Control Section.....	7
2.3.2.1	User Action Menu	7
2.3.2.2	Computer Response Menu	7
2.3.2.3	Comment Field	11
3	Using your Shuttle device.....	12
3.1	Going through Existing Settings	12
3.2	Exporting Settings Info.....	12
3.3	Associating a Function with a Shuttle Component	14
3.4	Modifying Existing Settings	14
3.5	Programming Global Settings.....	15
4	Multiple application settings and multiple devices	16
4.1	Using the Shuttle Device Helper to Switch Settings	16
4.2	Using multiple devices.....	16
5	Programming your Shuttle device	18
5.1	Create New Settings	18
5.1.1	Create New Settings from Existing Settings.....	18
5.1.2	Create Empty Settings	19
5.2	Rename Settings.....	20
5.3	Change Target Application.....	20
5.4	Change Target Device.....	20
5.5	Revert to Factory Settings	21
5.6	Remove Settings.....	21
5.7	Import Settings.....	22
5.8	Export Settings	22
5.9	Rebuild the whole settings file	22
6	Programming macros with Key Composer™ (ShuttlePRO v2 only).....	23
6.1	Macro with one group of multiple actions	24
6.2	Macro with multiple groups of multiple actions	26
7	Updating or Uninstalling your Shuttle device Software	28
7.1	Updating from version 1.x	28
7.2	Updating from version 2.x	28
7.3	Updating your Application Settings List manually	29
7.4	Uninstalling Shuttle Device Software	29

8	Troubleshooting / Frequently Asked Questions (FAQ)	30
8.1	General topics	30
8.2	Applications specific topics	31
9	Glossary of Terms and Components.....	32
10	Contour Customer Care	33
10.1	Technical Support.....	33
10.2	Warranty Statement	33
	Appendix 1: Example on how to program Global Settings	35

Programs and products names mentioned herein are Trademarks or Registered Trademarks of their owners.

1 Introduction to Shuttle Devices

Contour Shuttle devices have been designed to enhance the productivity of multimedia content creators, but they also increase productivity in many other types of applications, including:

- graphics and photo editing
- word processing
- spreadsheet manipulation
- internet operations
- medical imaging
- any application that uses key commands

Contour Shuttle devices consist of two (2) components: the ergonomically designed device itself and the software that allows you to manage it.

All Contour Shuttle **devices** have a Jog wheel and a Shuttle ring that are programmable. The ShuttleXpress has five (5) programmable buttons, the ShuttlePRO has thirteen (13) programmable buttons, and the ShuttlePRO v2 has fifteen (15). The two top rows of buttons on the ShuttlePRO series have removable caps so the included labels can be inserted for quick reference as to which functions each button is programmed to perform. Buttons, Jog wheel and Shuttle ring will be referred to as Shuttle components.



Fig. 1-1 ShuttlePRO v2 Layout



Fig. 1-2 ShuttlePRO Layout



Fig. 1-3 ShuttleXpress Layout

The Shuttle device **software** allows you to manage a specific configuration of your Shuttle device for every application you have on your computer.

The software will automatically select the appropriate configuration according to the current active application.

The installation package provides pre-installed settings (factory settings) for many common applications; you can modify these settings at anytime and/or create new settings for other applications, through the Shuttle device Control Panel.

1.1 Installing Shuttle Device Software

It is recommended to **install the software before plugging** your Shuttle device into any available USB port.

Shuttle devices are "plug and play": there is no need to shutdown and restart your computer when you plug or unplug the device from a USB port.

1.1.1 System Requirements

- System running Windows 98, 98SE, ME, 2000 or XP.
- Available USB port. (A direct USB port connection is desirable, but a hub connection will also work. Contour recommends using powered hubs and against using conversion devices, such as USB adapters.)
- 10 Mbyte of hard disk space for the Shuttle device driver installation.

1.1.2 Installation Procedure

Notes:

- 1) It is recommended that you close all other applications that may be running on your system and that you disable any virus protection software until after the installation is complete.
- 2) If you have any previous Shuttle devices driver installed on your system, please refer to paragraph 7 (Updating or Uninstalling your Shuttle device Software) before proceeding.
- 3) For Windows 2000 and XP users: installing the driver requires system-administrator security privileges.

Step 1. Locate and double-click the Contour Shuttle device driver installer.

Step 2. A dialog box will prompt you through the installation process. Once installation is complete you should receive a message stating, "Contour Shuttle Device Driver has been successfully installed. Press the Finish button to exit Setup program."

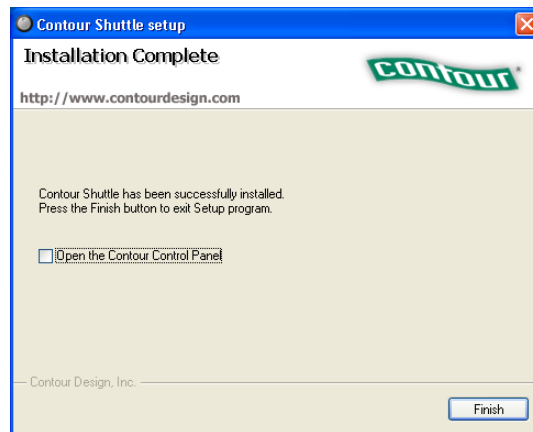


Fig. 1-4

Note: A restart is NOT necessary after the installation is complete.

2 Shuttle Device Control Panel

The Shuttle Device Control Panel is the component of the software that allows you to manage your Shuttle device by defining and/or modifying application settings.

Application settings are the individual sets of actions associated to the Shuttle components for a pre-determined application. Stated differently, the Control Panel manages application settings.

Changes performed on the application settings are enabled as soon as you click on the Apply or OK button in the Control Panel.

The Control Panel does **not** need to be open when you use the Shuttle device.

The software automatically detects the program you are using and automatically switches to the correct application settings associated with the application.

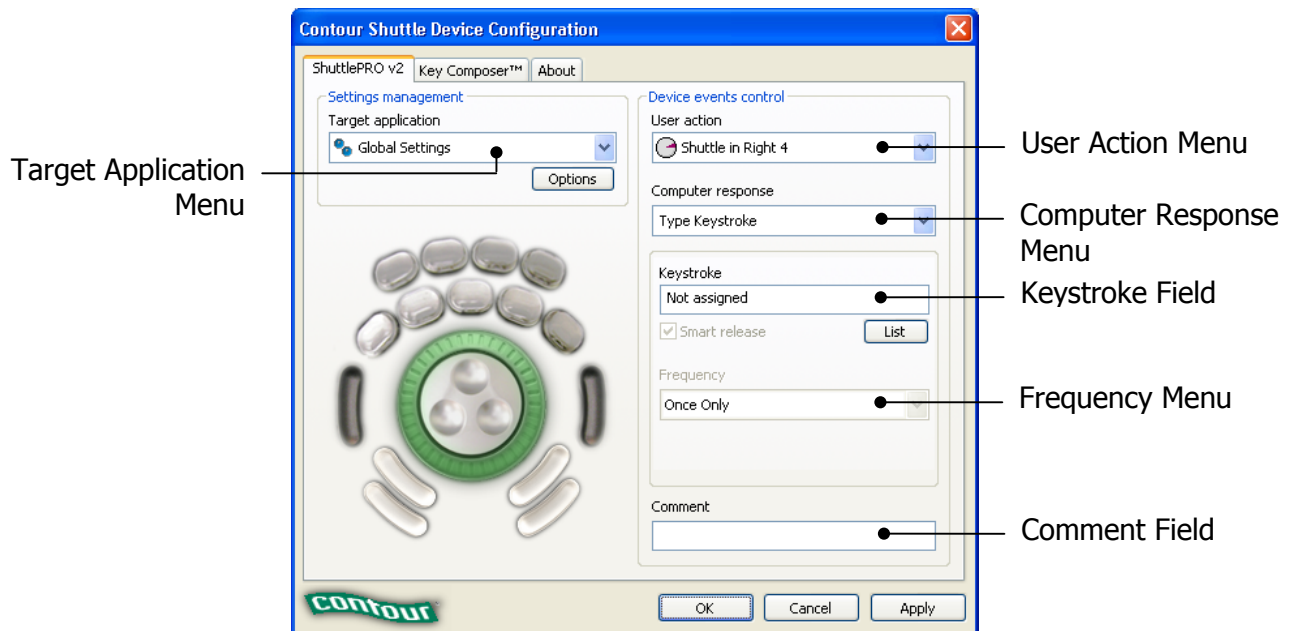
2.1 Control Panel Overview

The Shuttle device Control Panel provides a specific properties page for each type of Contour Shuttle device. The page related to your Shuttle device will be enabled as soon as you plug the device into your computer for the first time and will remain even after unplugging the device.

The Key Composer™ tab is enabled together with the ShuttlePRO v2 tab only.



Fig. 2-1



2.2 Opening the Shuttle Device Control Panel

This section briefly describes how to access the Shuttle device Control Panel.

The described method provides the fastest access to the Shuttle device Control Panel and to some of its frequently used features.

- Step 1.** Locate and click the Shuttle device Helper Menu icon.
The Shuttle device Helper is located in the Task bar, which is located in the lower right hand corner of your screen. It is represented as a gray jog and shuttle ring icon.



Fig. 2-2

- Step 2.** A pop up menu will appear.



Fig. 2-3

- Step 3.** Click **Open Control Panel** from the menu.

Note: The Contour Shuttle Device Configuration panel is an applet of the Windows Control Panel. Therefore, the Contour Shuttle Device icon also appears in the Windows Control Panel.

The Shuttle configuration icon may also appear in the Programs submenu, depending on the installation options you chose.

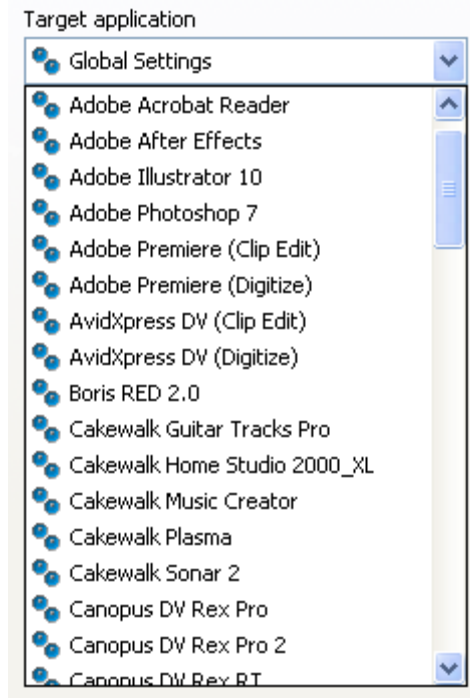
2.3 Control Panel Components

The Control Panel consists of two sections:

- the settings management section – this section acts on settings as a whole. It allows you to select existing settings, to create new settings and to import/export settings.
- the device events control section – this section acts on each of the Shuttle device components for the setting selected in the Target Application Menu.

2.3.1 Settings Management Section

2.3.1.1 Target Application Menu



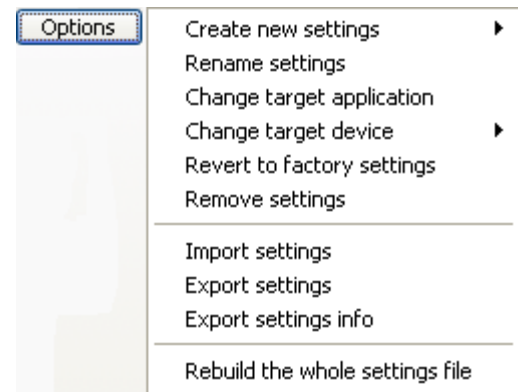
This menu stores all of the currently installed application settings. In order to view or customize an application setting you will have to first select it through this menu.

This menu contains a Global Settings selection, which is a setting that is active when the current application doesn't have any specific settings assigned (the application is not targeted).

Let's explain this through an example: in the installation package, Notepad doesn't appear in the Target Application Menu, meaning there are no specific settings for Notepad. Therefore, whenever you use the Notepad program, your Shuttle device is configured according to the Global Settings. Please refer to paragraph 3.5 for more information about Global Settings.

Adobe Premiere, on the other hand, would use the Adobe Premiere specific settings and NOT Global Settings.

2.3.1.2 Options Button



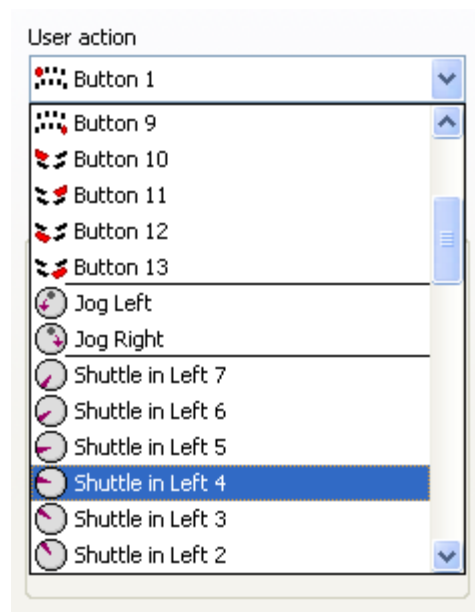
This button allows you to select functions to work on settings. These functions include:

- **Create new settings** does what the name implies – selection of this option allow you to create new settings, either from empty settings, or copying from Global settings or the current application selected in the Target Application Menu.
- **Rename settings** allows you to change the selected setting name. This command is **not** allowed on Global Settings.
- **Change target application** This option allows you locate a different executable file for the application corresponding to the selected setting. This option is useful when a new version of a program changes the name of the executable file itself.
- **Change target device** If you have two Shuttle devices, this option allows you to specify which device, primary or secondary, the selected setting will respond to. Global Settings are always active for all devices.
- **Revert to factory settings** allows you to restore a setting that you may have modified, by reloading the original setting.

- **Remove settings** allows you to remove the selected setting from the Target Application Menu. This command is **not** allowed on Global Settings.
- **Import settings** allows you to add a new setting created by Contour, or another Shuttle user, to the existing settings list.
- **Export settings** allows you to export the setting selected in the Target Application Menu, in order to share it with other users, or back it up for security. The file that will be created will have the .pref extension and will be located in the folder of your choice.
- **Export settings info** will create an html file that will contain an image of the Shuttle device with bubble descriptions (the contents of the Comment field) of the actions associated to each of the Shuttle components.
- **Rebuild the whole settings file** resets the settings collection of all Shuttle devices to the factory provided one. With this operation all user-made and customized settings will be lost.

2.3.2 Device Events Control Section

2.3.2.1 User Action Menu



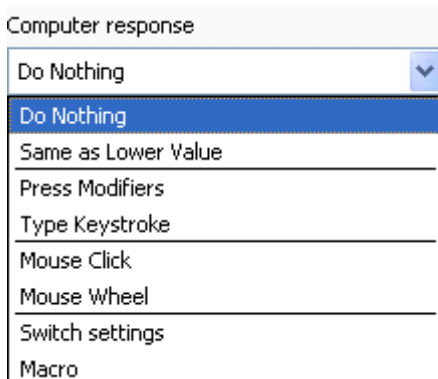
This menu allows you to choose which button(s) or feature(s) you wish to program. You can select any of the buttons, Jog right or left, Shuttle positions and transitions.

Shuttle positions are points set in intervals along the right and left (clockwise and counterclockwise) sides of the Shuttle Knob. The Shuttle ring has seven (7) distinct zones in each direction and a rest zone.

Shuttle transitions are points in between Shuttle positions.

Note: The primary buttons, Jog directions and Shuttle positions can be accessed more easily by simply clicking the desired button or moving the Jog or Shuttle on the device itself. This will automatically bring its option up in the User Action Menu. Shuttle transitions are only accessible through the pull-down menu.

2.3.2.2 Computer Response Menu



The Computer Response Menu allows you to pick a function that you want a button or other feature to perform:

- **Do Nothing** does what the name implies – selection of this option means that the button or other feature will do nothing.
- **Same as Lower Value** will perform the same function as the immediately previous command on the shuttle knob. This command is **only** allowed on the Shuttle positions.

- **Press Modifiers** This option allows you to place one or more Modifier keys in a given target button. The Modifier keys are the Shift, Alt, Control and Win keys.
- **Type Keystroke** on the menu allows you to type a keyboard shortcut in the Keystroke field. The text associated with Keystroke field (Comment field) provides additional guidance.
- **Mouse Click** will allow you to associate a mouse click. A Modifier key can be also associated to the mouse click.
- **Mouse Wheel** will either perform a wheel up or wheel down movement. A Modifier key can be also associated to the wheel movement.
- **Switch settings** allows you to perform as a toggle in cases where an application has more than one application setting defined.
- **Macro** (ShuttlePRO v2 only) allows you to associate one of the available macros to a Shuttle component or to create your own macro.

In the following paragraphs, a detailed description of the Computer Response functions is given.

2.3.2.2.1 Modifier Keys and Smart Release Check Box

A Modifier key is one of the following keys: Shift, Alt, Control, Win. Modifier keys can be selected one at a time or combined together.

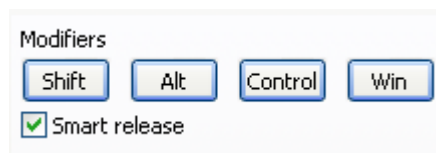
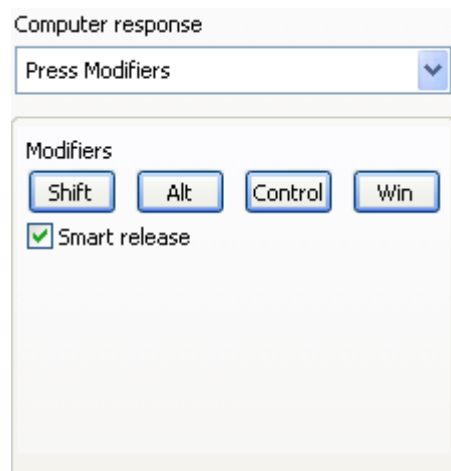


Fig. 2-4

You can program the Shuttle components to perform repeated pressure (or hold down) of the modifier keys. The Smart Release checkbox enables a software optimization of these repeated keystrokes in order to optimize application performance.

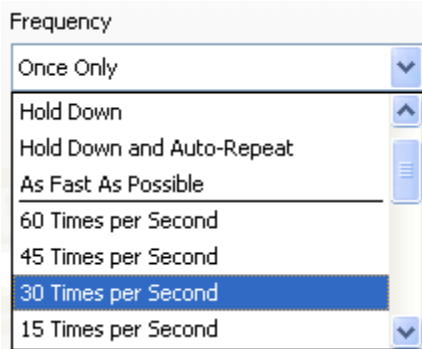
However, this optimization may interfere with some applications, usually games, that have a particular specialized use of the modifier keys. In those cases you can disable the Smart Release feature.

2.3.2.2.2 Press Modifiers



The Press Modifiers action is used when you want a button, jog or shuttle position to perform a modifier key.

2.3.2.2.3 Frequency Menu



The Frequency Menu allows you to specify how many times you want a command to occur. It allows the event to occur once, as fast as possible, or a specified number of times per second, or at slower speeds measured by the number of seconds between occurrences.

Let's point out the difference between Once Only, Hold Down and Hold Down and Auto-Repeat:

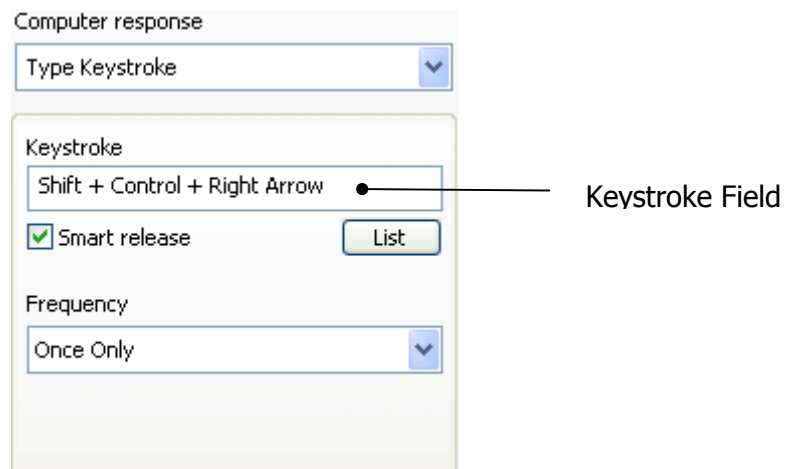
- Once Only simulates a keystroke pressure immediately followed by its release.
- Hold Down simulates a keystroke pressure until the associated Shuttle component is released.
- Hold Down and Auto-Repeat simulates many time-spaced keystroke pressures until the associated Shuttle component is released.

The Frequency Menu is available for the following Computer Response actions:

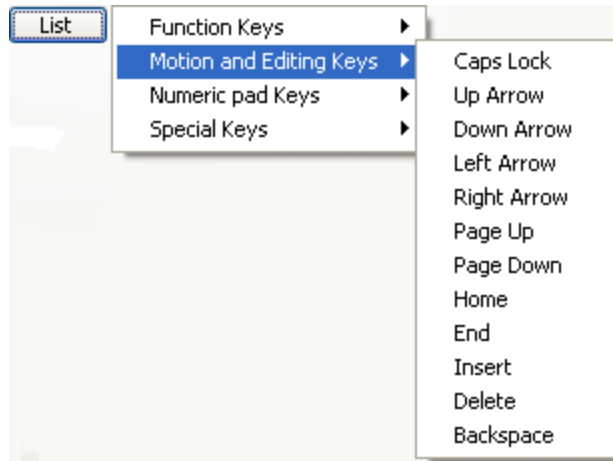
- Type Keystroke
- Mouse Click
- Mouse Wheel

2.3.2.2.4 Type Keystroke

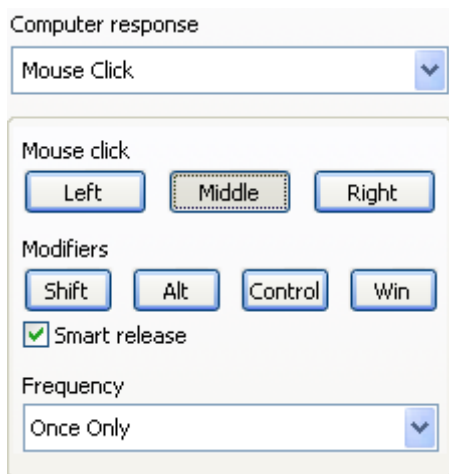
Choosing this action allows you to type into the Keystroke Field the keyboard shortcuts that you want a button or Jog Wheel or Shuttle Knob position to perform.



Instead of typing special keystrokes on the keyboard, you can select them from the **List** Button, by clicking on the corresponding right side icon:



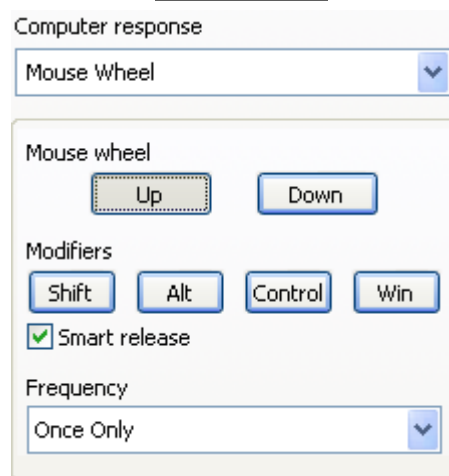
2.3.2.2.5 Mouse Click



This action allows you to associate a mouse click (either left, middle or right) to a Shuttle component. A Modifier key can also be associated to the mouse click in order to modify its behavior.

The click frequency can be set through the Frequency Menu.

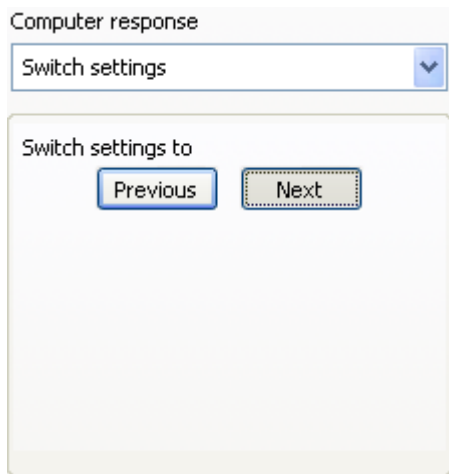
2.3.2.2.6 Mouse Wheel



This action allows you to associate the scrolling feature (wheel up or wheel down) to a Shuttle component. A Modifier key can also be associated to the wheel movement.

The wheel tick frequency can be set through the Frequency Menu.

2.3.2.2.7 Switch settings



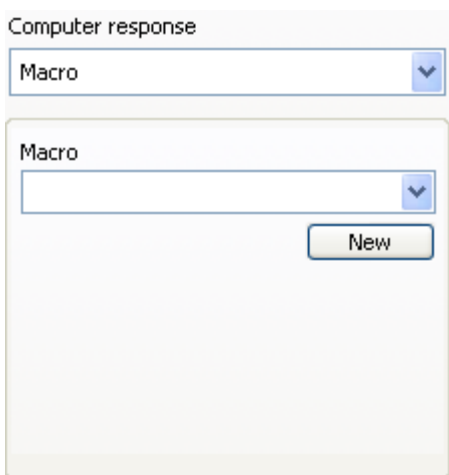
This action allows you to perform as a toggle in cases where an application has more than one application setting defined for it.

This action is an alternate method of switching settings, which can be faster than using the Shuttle device Helper in the task bar (please refer to paragraph 4.1 for more information about this method).

In order for this option to work efficiently, all settings for a program SHOULD have this option enabled, preferably all on the same button.

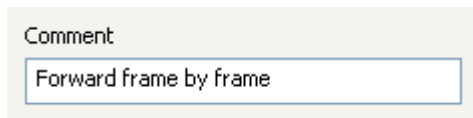
Let's explain this through an example: suppose you have three (3) different settings for a specific program and that Button 1 is defined as "Switch to the Next Setting" for all the three settings. When the program is first loaded, the first setting is the default. When you press Button 1, you will switch to the second setting. And when you press it again, you will switch to the third setting. Press Button 1 again to go back to the first setting.

2.3.2.2.8 Macro (ShuttlePRO v2 only)



This action allows you to associate to a Shuttle component one of the existing macros by choosing it from the pull-down menu, or to create your own new macro. To learn more about how create new macros, refer to paragraph 6 (Programming macros with Key Composer™ (ShuttlePRO v2)).

2.3.2.3 Comment Field



The Comment Field allows you to write a comment about a command. Click the field and type in a description.

3 Using your Shuttle device

Now that you have become familiar with the Control Panel components, let's move on to using and modifying existing settings.

Before going through the contents of this section, **open the Control Panel** (refer to paragraph 2.2 for guidance on how to accomplish this).

Note: Changes you perform on settings will **not take effect until you press Apply or OK.** (OK will automatically close the Control Panel.) You can press Cancel to close the Control Panel without saving your changes.

3.1 Going through Existing Settings

In order to view the Shuttle components definition for a particular application, perform the steps below:

1. Choose an application from the Target Application Menu.
2. Press each of the buttons of your Shuttle device controller (or select them in the User Action Menu) to see the computer response associated to the button and the related explanation in the comment field.
3. Move the Jog and the Shuttle on your Shuttle device controller (or select the Jog/Shuttle positions and the Shuttle transitions in the User Action Menu) to see the computer response associated to each position of the Jog and Shuttle components.

For a more general overview of settings functions, proceed to the paragraph below.

3.2 Exporting Settings Info

To create an html file that contains all the settings information:

1. Click on the Target Application Menu and select the application setting you would like to export. (After so doing, you should see the setting name highlighted in the Target Application Menu).
2. Click on the Options button. Select Export settings info from the pull-down menu.
3. A dialog box will prompt you to type a name for the file that will be created and to choose its destination folder. Once you have done so, click on **Save** in the lower right hand of the dialog box.
4. Locate and double-click to open the newly created file. We suggest you print it for your reference when using the application.

Note: The html file is printable using any Internet browser. We suggest you set the page orientation to landscape in your printer options.

Below is the html file created with the Export Settings Info option for Adobe Premiere (Clip Edit).

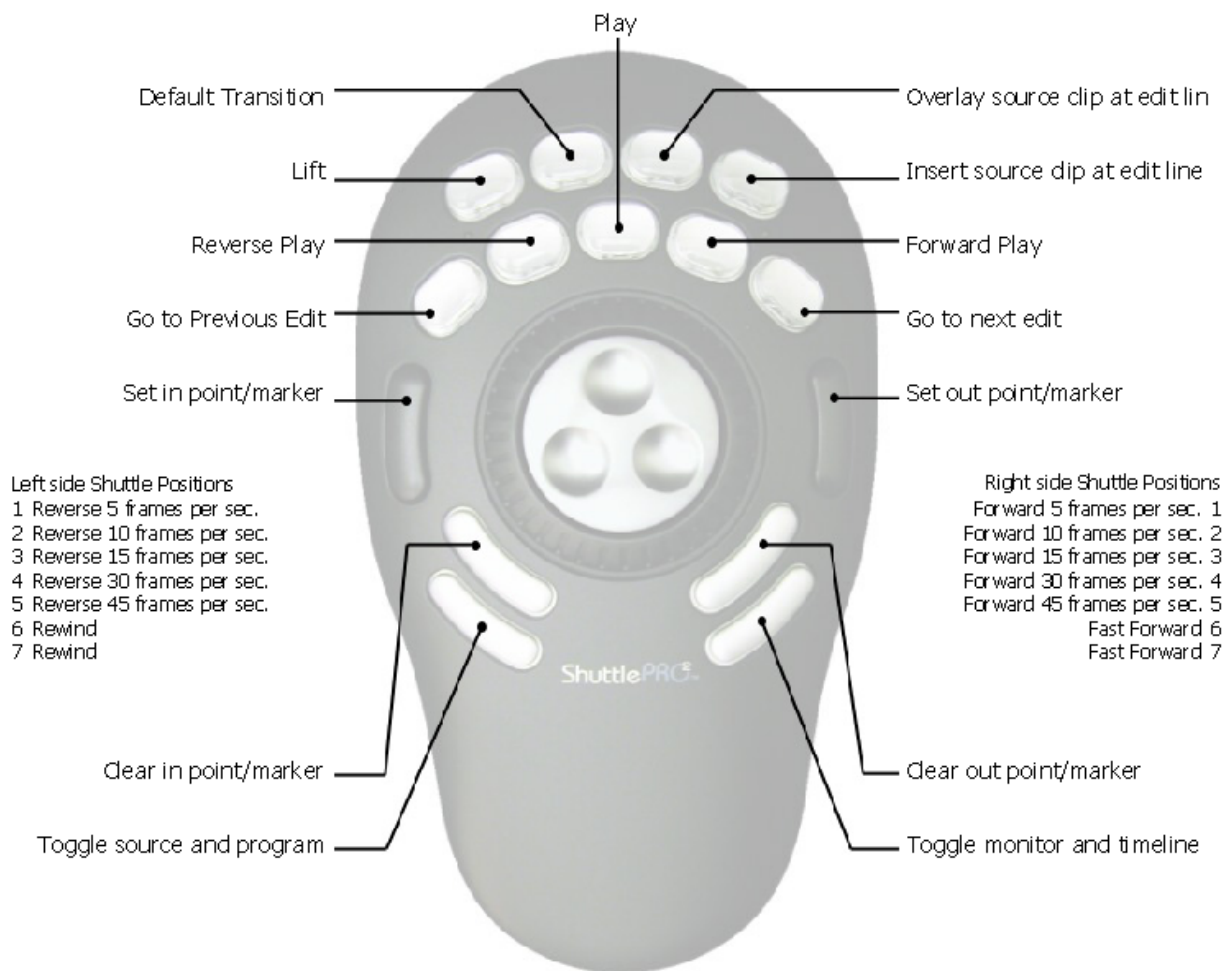


Fig. 3-1 Exported settings info for Adobe Premiere (Clip Edit)

3.3 Associating a Function with a Shuttle Component

When you modify an existing or newly created setting, you want to modify the function associated with the Shuttle components.

These steps are general and we will refer to this paragraph often hereafter.

First open the Control Panel and select one application setting in the Target Application Menu.

1. Through the User Action Menu, select the Shuttle component you want to assign the function to. You can choose between:
 - button
 - jog
 - Shuttle position
 - Shuttle transition.
2. Click on the **Computer Response Menu** and select the function you wish the Shuttle component to perform. Choose according to the following table:

	Button	Jog Direction	Shuttle Position	Shuttle Transition
Do Nothing	X	X	X	X
Same as Lower Value	NA	NA	X	NA
Press Modifiers	X	X	X	X
Type Keystroke	X	X	X	X
Mouse Click	X	X	X	X
Mouse Wheel	X	X	X	X
Switch settings	X	X	X	X
Macro (ShuttlePRO v2 only)	X	X	X	X

3. Add a description of the requested action in the Comment Field
4. Click **Apply** when completed.

3.4 Modifying Existing Settings

This section explains how to modify a function of the Shuttle device for an existing application setting.

1. Click on the **Target Application Menu** and select the application setting you would like to modify.
2. Click on the **User Action Menu** and select the Shuttle component whose function you wish to change. Once chosen, you should see it highlighted in the User Action Menu. In order to modify its function, refer to paragraph 3.3 for guidance on how to accomplish this.
3. Repeat step 2 for each Shuttle component you would like to modify.
4. Once you have completed the desired changes, click **Apply**. The new settings will immediately take effect. (There is no need to restart the computer.) Next time you reload the setting, you will notice that the label below the Target Application Menu will appear as "Customized Settings", instead of "Factory settings" to indicate you made changes to the application setting.
5. You can now close the Shuttle device Control Panel and use your Shuttle device.

Note: you can always use the Options menu item Revert to Factory Setting, or remove the setting and re-import it to reverse your changes later.

3.5 Programming Global Settings

Global Settings is a setting that works in all the applications that do not have specific settings listed in the Target Application Menu. Stated differently, if you have settings defined for a particular application, Global settings will not be activated for that application, since it is meant for general purposes only.

Global Settings can't be targeted to the primary or secondary device: it's always targeted to both devices.

When you open the Control Panel, Global Settings is always selected in the Target Application Menu. By default, all the Shuttle components in Global Settings are set to Do Nothing.

However, Global Settings can be used to close applications and/or for scrolling purposes. For example, associate:

- Alt+F4 (close the current window) to a button,
- the mouse wheel movement to the jog directions and
- the left and right arrows to the Shuttle ring positions by varying the frequency.

Global Settings can be modified the same way you would when you modify any other setting, by following the steps of paragraphs 3.4 and 3.3.

In Appendix 1, you will find a step-by-step example on how to program Global Settings on the ShuttlePRO, performing the above associations.

4 Multiple application settings and multiple devices

Some applications, such as Adobe Premiere or Pinnacle Edition, allow multiple modes of usage. Contour Shuttle devices address some of them by providing multiple sets of application settings for these applications in the installation package.

If you have one Shuttle device, you can switch between these settings through the Shuttle device Helper.

If you have two Shuttle devices, one of them will be targeted as primary device and the other one as secondary device; and, for multiple mode applications, you can associate a setting to the primary device and another setting to the secondary device.

4.1 Using the Shuttle Device Helper to Switch Settings

If you are using an application with multiple application settings, you can switch between them quickly via the Shuttle device Helper.

To switch settings or modes, do the following;

1. With desired application open and in the foreground, click the Shuttle device Helper (found in the Task Bar. Refer to Fig. 2-2 on page 5.)
2. Notice that the Shuttle device Helper has each setting currently installed for the desired application listed. The current active setting is shown by a small check mark. Click the setting you want to use.
3. Once you have selected the desired setting, you can use it immediately inside the application.

Through the Shuttle device Helper you can verify that the software is recognizing the application currently in use: simply move the mouse cursor above the Shuttle device Helper icon (without clicking on the icon) and a pop window will show you the name of the application currently in use.



Fig. 4-1

4.2 Using multiple devices

You can simultaneously plug in up to two Shuttle devices of the same model.

For each model, when two devices are plugged in, one device is defined as primary, the other as secondary. The order in which the devices are plugged in determines their status as the primary or secondary device. More on this below...

This mechanism is very useful when you have multiple-mode applications for which more than one setting has been created. For these applications you can target settings, either to be primary-device specific or secondary-device specific. A primary-device specific setting will be used only by the primary device. Refer to paragraph 5.4 for guidance on how to target settings.

The software automatically determines the status of the device (primary or secondary) and will not lose this information after computer reboot.

Below is a description of how this mechanism works.

For simplicity sake, let's consider one device model only, let's say ShuttlePRO v2. (The same mechanism will work with the ShuttlePRO or the ShuttleXpress.)

If you only have one ShuttlePRO v2 (SP1), the device will be targeted as primary device, no matter which USB port you plug it in to.

With SP1 plugged in, plug the second ShuttlePRO v2 (SP2) into another USB port. SP2 will be targeted as the secondary device.

- If you keep the devices plugged in to the same ports, the device targeting won't change across computer reboots.
- If you unplug SP2 only, SP1 will be kept as primary device. And when you plug SP2 back in, SP2 will be set to secondary again.
- If you unplug SP1 only, SP2 will be kept as secondary device. And when you plug SP1 back in, SP1 will be recognized as primary.
- If you unplug both SP1 and SP2, the next time you plug in a ShuttlePRO v2, it will be tagged as SP1 (primary) or SP2 (secondary), depending on the port you plug it in.

5 Programming your Shuttle device

This section will analyze in detail the operations you can perform on settings from the Options button in the Settings Management section.

Before going through the contents of this section, **open the Control Panel** (refer to paragraph 2.2 for guidance on how to accomplish this).

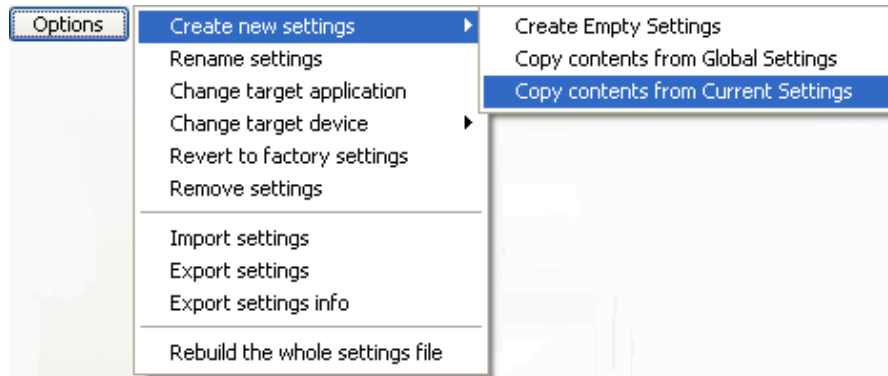
Note: Changes you perform on settings will **not take effect until you press Apply or OK**. (OK will automatically close the Control Panel.) You can press Cancel to close the Control Panel without saving your changes.

5.1 Create New Settings

5.1.1 Create New Settings from Existing Settings

This function allows you to create new settings by copying them from existing settings.

1. Click on the Target Application Menu and select the application setting you would like to copy. (After so doing, you should now see this setting name in the Target Application Menu).
2. Click on the Options button in the Settings Management section and select **Create new settings**.



3. Select *either* the second item **Copy contents from Global Settings** *or* the third **Copy contents from Current Settings**.
4. A dialog box will prompt you to locate the target application. Select the application you want the new settings to be associated with and click **Open** in the right hand of the dialog box.
5. The name of the application will now appear in the Target Application Menu. Refer to paragraph 5.2 to change the application setting name. All the Shuttle components are set by default to Do Nothing. Refer to paragraph 3.3 for guidance on how to modify their function.
6. Repeat step 5 for each Shuttle component you would like to modify.
7. Once you have completed the desired changes, click the **Apply** button and then close the Shuttle device Control Panel. You are ready to use the setting(s) within the selected application of your choice.

5.1.2 Create Empty Settings

This function allows you to create new settings for any application on your computer. This application you wish to use a Shuttle device with should meet one of the following criteria:

- allow keyboard shortcuts to various functions within the application,
- support scrolling and/or moving along time lines or frames.

Before analyzing the procedure itself, here are a couple of tips that can be useful when you want to create new settings from scratch.

For the buttons:

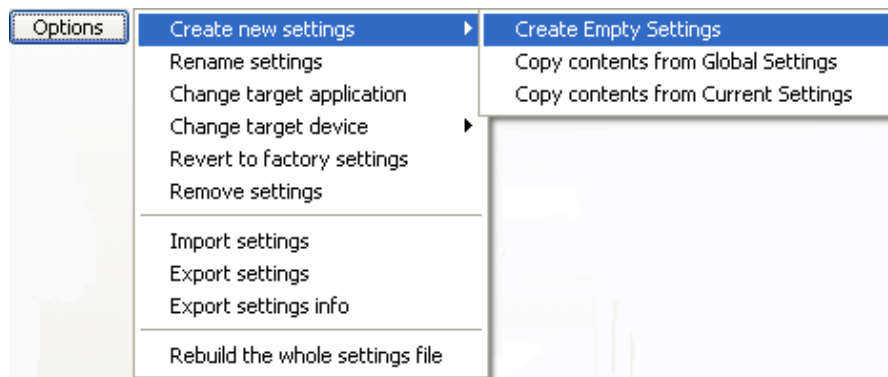
1. create a list of all the keyboard shortcuts available for your application.
2. identify the ones you use most frequently.
3. associate the keyboard shortcuts to the buttons in the way that is most comfortable and efficient for you.

Jog and Shuttle are very useful for scrolling and/or moving along a time line or time frame.

The Shuttle positions are usually associated with the same Computer response, but the related frequencies will differ.

In order to create new settings:

1. Click on the Options button in the Settings Management section and select **Create new settings**.



2. Click on the first item **Create Empty Settings**.
3. A dialog box will prompt you to locate the Target Application. Select the application you want to target and click **Open** in the right hand of the dialog box. The file you should select is normally the executable file (.exe) for the application. (In some cases the target is a .mod file as in the case of Pinnacle Edition.)
4. The name of the application will now appear in the Target Application Menu. Refer to paragraph 5.2 to change the setting name. All the Shuttle components are set by default to Do Nothing. Refer to paragraph 3.3 for guidance on how to modify their function.
5. Repeat step 4 for each Shuttle component you would like to modify. If you have finished the desired changes, click the **Apply** button.
6. Close the Shuttle device Control Panel and use the setting(s) within the selected application of your choice.

Note: It is strongly recommended that you set up **all of the Shuttle positions**. If you do not want a Shuttle Knob position to perform a function, then set that position to **Do Nothing** or **Same as Lower Value**.

5.2 Rename Settings

If you want to rename an application setting:

1. Click on the Target Application Menu and select the application setting you would like to rename. (You should now see this setting name in the Target Application Menu).
2. Click on the Options button in the Settings Management section. The setting you selected in step 1 should be highlighted. Select **Rename Settings** from the pull-down menu.
3. Enter a name of your choice (up to 31 characters) in the Target Application field. You **MUST** use a different name for each setting.
4. Press **Enter** on your keyboard to save the new name.
5. Click **Apply** to validate the change.

5.3 Change Target Application

If you want to change the target application (the executable file to which the setting is related):

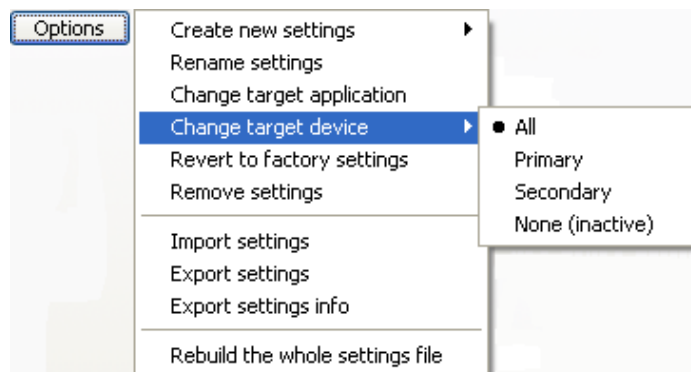
1. Click on the Target Application Menu and select the application setting that you would like to associate to another application. (After so doing, you should now see this setting name highlighted in the Target Application Menu).
2. Click on the Options button in the Settings Management section. Select **Change target application** from the pull-down menu.
3. A dialog box will prompt you to locate the target application. Select the application you want and click **Open** in the right hand of the dialog box.
4. Click **Apply** to validate the change.


5.4 Change Target Device

By default all settings are targeted to all devices.

For multiple-mode applications that have more than one setting, you can tag settings either to be primary-device specific or secondary-device specific, so that they will be used only by the corresponding device.

1. Click on the Target Application Menu and select the application setting you would like to tag. You should now see this setting name highlighted in the Target Application Menu.
2. Click on the Options button in the Settings Management section. Select **Change target device** from the pull-down menu.



3. You can choose between:
 - **All** (identified by the icon 

5.5 Revert to Factory Settings

When you modify a factory setting, this setting is tagged as Customized. You can restore the factory setting through this option:

1. Click on the Target Application Menu and select the application setting that you would like to restore. You should now see this setting name highlighted in the Target Application Menu.
2. Click on the Options button in the Settings Management section. Select **Revert to factory settings** from the pull-down menu.
3. The setting is reverted to the original factory settings and tagged as Factory Settings as it was at installation.
4. Click **Apply** to validate the change.

Note: This operation also reverts to the original target application (in case you retargeted the setting to a different executable.)

5.6 Remove Settings

You may want to remove (delete) an application setting from the target application list.

1. Click on the Target Application Menu and select the application setting you would like to remove. (After so doing, you should now see this setting name in the Target Application Menu).
2. Click on the Options button in the Settings Management section and select **Remove settings**.
3. A dialog box will prompt you: "Are you sure to remove the selected settings?". Click **Yes**. The application setting is now removed from the Target Application Menu.
4. Click **Apply** to validate the change. (Once you have clicked Apply, the operation can't be undone.)

Note: you can import the same setting again later as we maintain a list of settings available for download on our website. This is sometimes useful as well when Contour releases a new version of settings for a particular application that we have found a better solution for.

5.7 Import Settings

Note: This import capability exists ONLY when an established setting is available. An alternate approach could be to export a setting and, in so doing, give it a different name – the one you want to use for a future import.

1. Click on the Options button and select **Import settings**.
2. Locate the setting you wish to import.
3. Once you have chosen the setting you want to import click **OK**. This setting will now appear in the Target Application Menu.
4. Click **Apply** when completed.

5.8 Export Settings

If you want to export an application set, in order to share it with other users, or back it up for security:

1. Click on the Target Application Menu and select the application setting you would like to export. (After so doing, you should now see this setting name highlighted in the Target Application Menu).
2. Click on the Options button. Select **Export settings** from the pull-down menu.
3. A dialog box will prompt you to type a name for the file that will be created and to choose its destination folder. Once you have done so, click on **Save** in the lower right hand of the dialog box. The created file will have the .pref extension and will be located where specified.

5.9 Rebuild the whole settings file

This option will reset the settings collection of **all** Shuttle devices to the factory provided one.

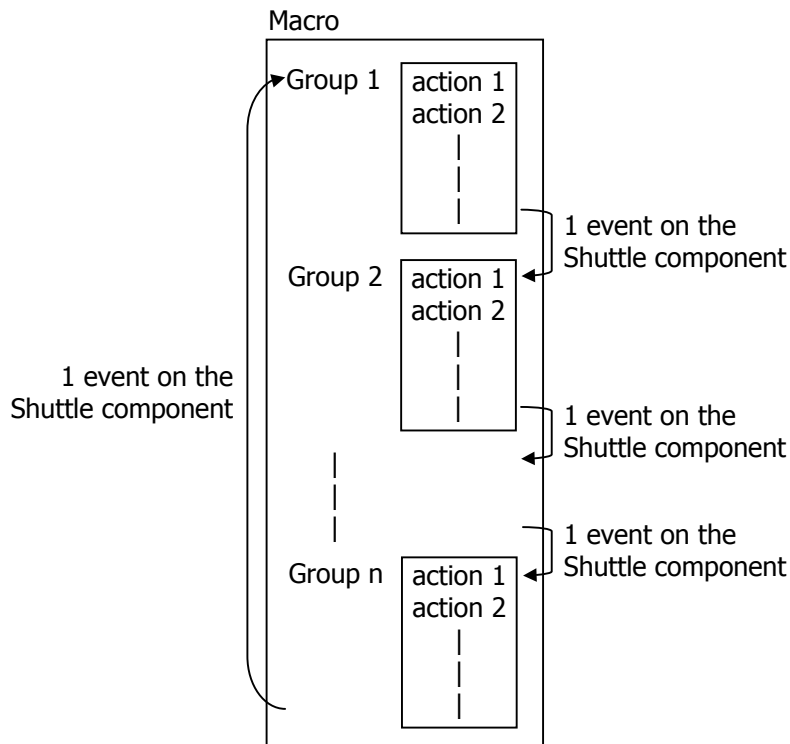
Note: With this operation **all user-made settings and customized settings created for all Shuttle devices will be lost** and this operation can't be undone.

1. Click on the Options button and select **Rebuild the whole settings file** from the pull-down menu.
2. A warning message will ask you to confirm this operation. Click **Yes** to proceed.

6 Programming macros with Key Composer™ (ShuttlePRO v2 only)

This section will analyze in detail how to create new macros for your ShuttlePRO v2 in the Key Composer tab.

A macro is an automated sequence of actions (divided in one or more groups) that can be stored and then recalled with a single Shuttle component. By action we mean: keystroke combinations, keystroke sequences (text) or pause events. An event on the Shuttle component associated to a macro corresponds to the execution of **one single** group of action(s).



This definition leads to two different kinds of macros:

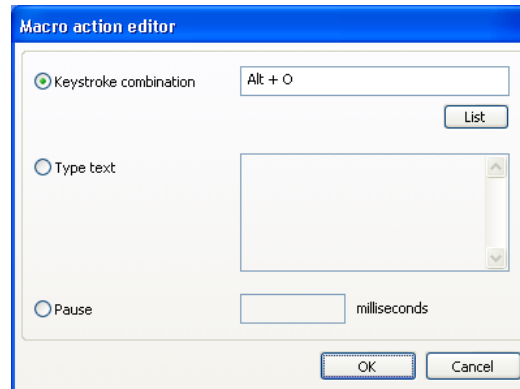
- macros composed by one group of actions, identified by the icon 🎯.
- macros composed by two (2) or more groups of actions, also called step-by-step macros, identified by the icon 🔄. Step-by-step macros are very useful to switch views or to toggle between tools.

Before going through the contents of this section, **open the Control Panel** (refer to paragraph 2.2 for guidance on how to accomplish this) and select the **Key Composer** tab.

To create a new macro:

1. Click on **New** in the Macro selection window.
2. A macro called 'Untitled' will be automatically created. Type the name of your new macro then type Enter.

3. Click on **Add in group** or **New Group** in the Action Sequence window to create a new action or a new group.
4. A dialog box will prompt you to choose if you want to type a keystroke combination or some text, or if you want to associate a pause event.



Select the option you prefer, than click **OK** in the lower right hand corner of the dialog box. The newly created action will appear in the Action Sequence window.

5. Repeat steps 1 and 4 for as many macros and actions as you want to add.

Let's explain how macros work through three examples. We will create:

- one macro composed by one group of multiple actions,
- one macro composed by multiple groups of multiple actions each.

6.1 Macro with one group of multiple actions

Let's create a macro that will apply the following font: Tahoma font, style bold, size 11, in a program like Microsoft Word or Notepad.

You usually apply this font by using the mouse or by typing a keystroke sequence on your keyboard. Here are the actions you usually perform to apply these changes:

1. click on Format on the standard toolbar (or type Alt+O)
2. go down to Font (or type F)
3. click on the Font click (or type Alt+F)
4. select Tahoma from the list (or type Tahoma in the Font field)
5. click on the Font Style field (or type Alt+Y)
6. select Bold from the list (or type Bold in the Font Style field)
7. click on the Size field (or type Alt+S)
8. select 11 from the list (or type 11 in the Size field)
9. click OK (or press the Enter key) to confirm our changes.

Let's create a macro based on these actions:

1. Click on New in the Macro selection window.
2. Type **My favorite font** then type Enter.
3. Click on New group in the Action Sequence window.
4. Choose Keystroke combo from the dialog box and type **Alt+O** (to enable the Format tab).
5. Click on Add in group in the Action Sequence window.
6. Choose Keystroke combo from the dialog box and type **F** (this will enable the Font option).
7. Click on Add in group in the Action Sequence window.
8. Choose Keystroke combo from the dialog box and type **Alt+F** (to enable Font field).
9. Click on Add in group in the Action Sequence window.
10. Choose Type text from the dialog box and type **Tahoma**.
11. Click on Add in group in the Action Sequence window.
12. Choose Keystroke combo from the dialog box and type **Alt+Y** (to enable Font Style field).
13. Click on Add in group in the Action Sequence window.
14. Choose Type text from the dialog box and type **Bold**.
15. Click on Add in group in the Action Sequence window.
16. Choose Keystroke combo from the dialog box and type **Alt+S** (to enable Size field).
17. Click on Add in group in the Action Sequence window.
18. Choose Type text from the dialog box and type **11**.
19. Click on Add in group in the Action Sequence window.
20. Choose Keystroke combo from the dialog box and select **Enter** (to close and confirm changes).
21. Type the description of your choice in the description field, for example: This macro applies the following font: Tahoma, style bold, size 11.

Your newly created macro will be displayed as depicted in Fig. 6-1.

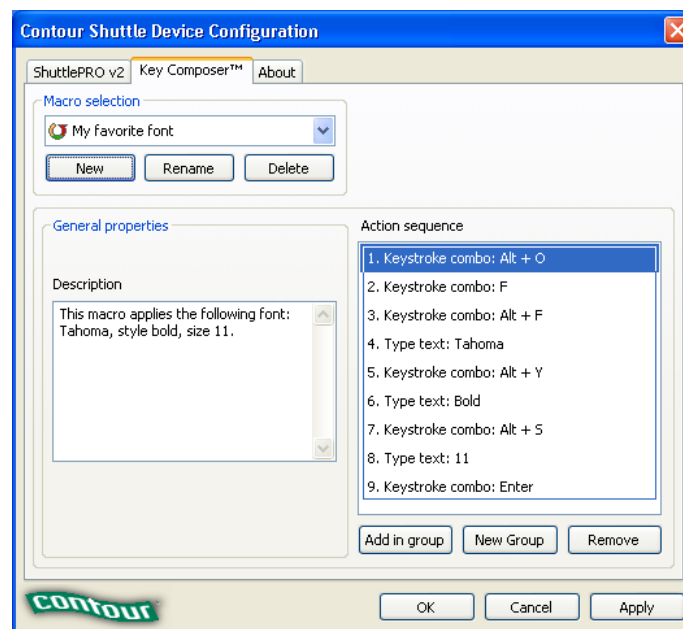


Fig. 6-1

From your ShuttlePRO v2 tab you will now be able to associate the newly created macro to a Shuttle component, let's say Button 13 (refer to paragraph 3.3 for guidance on how to accomplish this) as shown in Fig. 6-2.

Pressing Button 13 will play through **all the actions** shown in the Action sequence window.



Fig. 6-2

6.2 Macro with multiple groups of multiple actions

Let's create a macro that allows you to toggle views (Normal, Web Layout, Print Layout, Outline) in Microsoft Word.

You usually select views by using the mouse or by typing a keystroke sequence on your keyboard, specifically by clicking on View on the standard toolbar (or typing Alt+V), then going down to Normal (or typing N), Web Layout (or typing W), Print Layout (or typing P), Outline (or typing O).

Let's create a step-by-step macro based on these actions:

1. Click on New in the Macro selection window.
2. Type **Word - views** then type Enter.
3. Click on New group in the Action Sequence window.
4. Choose Keystroke combo from the dialog box and type **Alt+V** (to enable the View tab).
5. Click on Add in group in the Action Sequence window.
6. Choose Keystroke combo from the dialog box and type **N** (to select the Normal view).
7. Click on New group in the Action Sequence window.
8. Choose Keystroke combo from the dialog box and type **Alt+V** (to enable the View tab).
9. Click on Add in group in the Action Sequence window.
10. Choose Keystroke combo from the dialog box and type **W** (to select the Web Layout view).
11. Click on New group in the Action Sequence window.
12. Choose Keystroke combo from the dialog box and type **Alt+V** (to enable the View tab).

13. Click on Add in group in the Action Sequence window.
14. Choose Keystroke combo from the dialog box and type **P** (to select the Print Layout view).
15. Click on New group in the Action Sequence window.
16. Choose Keystroke combo from the dialog box and type **Alt+V** (to enable the View tab).
17. Click on Add in group in the Action Sequence window.
18. Choose Keystroke combo from the dialog box and type **O** (to select the Outline view).
19. Type the description of your choice in the description field, for example: This macro allows to toggle between views in Microsoft Word.

Your newly created macro will be displayed as depicted in Fig. 6-3.

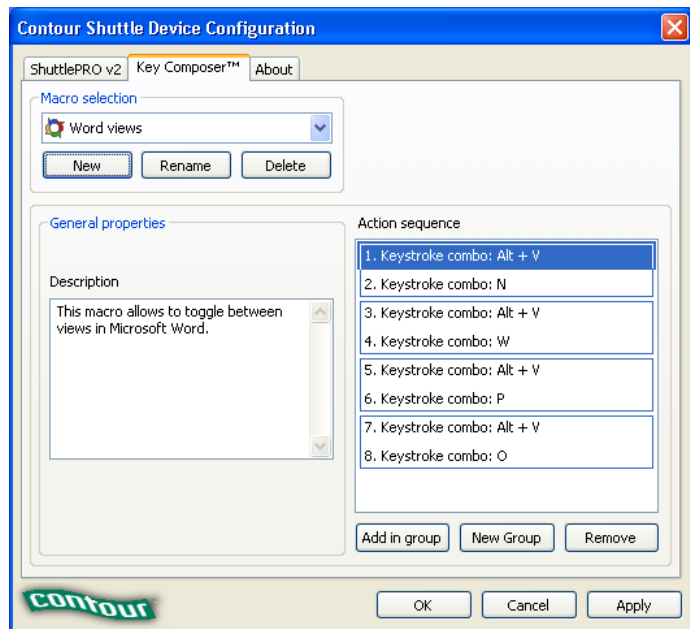


Fig. 6-3

From your ShuttlePRO v2 tab you will now be able to associate the newly created macro to a Shuttle component, let's say Button 13 again, as shown in Fig. 6-4.

Each time you press Button 13, you cycle between groups of actions, by execute the next group of the list. Once the last group has been played, the next pressure of Button 13 will reset the execution point to the first group in the list.

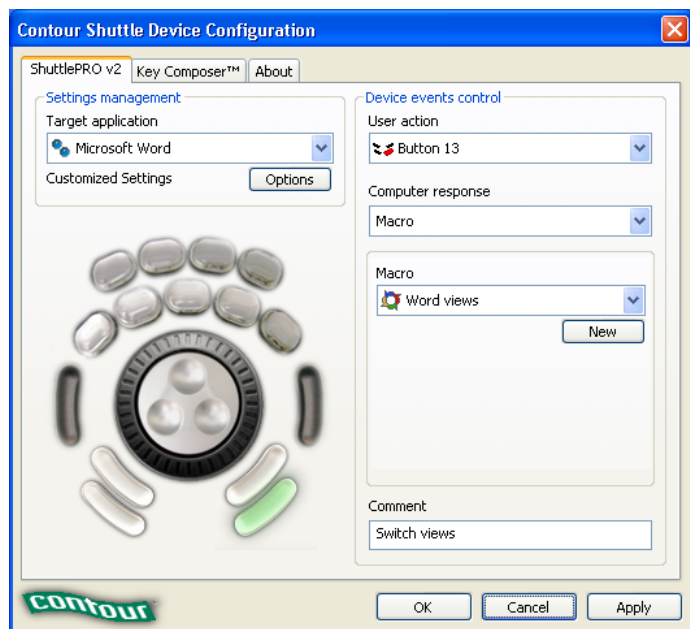


Fig. 6-4

7 Updating or Uninstalling your Shuttle device Software

Periodically, Contour provides new software updates on the website for downloading. We encourage you to stay current with your software to avoid incompatibilities with applications and setting features. Shuttle Device software is available at: <http://www.contourdesign.com>.

7.1 Updating from version 1.x

You will have to uninstall version 1.x before installing the new version (2.0 or later).

When uninstalling version 1.x, **all** settings within the Control Panel will be lost. Factory settings will be restored by version 2.x.

It is strongly recommended that before uninstalling the software, you export any application settings that you have created or modified from Factory settings (or write down all parameters for each setting that you wish to keep and use later on). You will have to import saved application settings or reprogram all custom application settings into the newly installed version.

To export settings:

1. Open the Control Panel.
2. Click on the Target Application Menu and select the application setting you would like to export.
3. Click on the Target Application Functions Menu. The setting you selected should be highlighted. Select Export Settings from the pull-down menu.
4. A dialog box will prompt you to type a name for the file that will be created and to choose its destination folder. Once you have done so, click on Save in the lower right hand of the dialog box. The created file will have the .pref extension and will be located where specified.
5. Repeat steps 2,3 and 4 for each setting you would like to export.
6. Close the Control Panel.

To uninstall version 1.x:

1. Click on the Start Menu in the lower left corner of your screen.
2. Select Programs and then Contour from the submenu.
3. In the Contour submenu click on the uninstaller.
4. A dialog box will prompt you to uninstall, click Yes.
5. A dialog box will now prompt you stating that the software has been removed. Click Close and exit the uninstall program.

7.2 Updating from version 2.x

Uninstalling the existing version is not necessary when updating a software version later than 2.0. Simply install the update above the existing version.

If the new Applications Settings list contains new Factory settings with respects to the Factory settings existing in your Applications Settings list, those settings will be added or updated. Customized and user-made settings will be left untouched.

7.3 Updating your Application Settings List manually

In order to begin, you must complete the following:

1. Log on to our website and locate the **Downloads** section.
2. Download the Shuttle device Application Settings only and store the file in a folder of your choice on your system.
3. Open the Shuttle device Application Settings Folder.
4. Peruse the list and see which Application Setting you are apt to use.
5. Open the Contour Shuttle device Control Panel and import the settings you wish to use. Refer to paragraph 5.7 for guidance on how to accomplish this.

7.4 Uninstalling Shuttle Device Software

This section describes how to uninstall the Shuttle Device software.

- Step 1.** Click on the **Start Menu** in the lower left corner of your screen.
- Step 2.** only for Windows 98 and 2000 users: Go up to **Settings**.
- Step 3.** Select **Control Panel**.
- Step 4.** Double-click on **Add/Remove Programs**.
- Step 5.** Locate and click on **Contour Shuttle**.
- Step 6.** Click on Change/Remove.
- Step 7.** In the dialog box select **Uninstall Contour Shuttle**, then click **Next**.
- Step 8.** The dialog box shown in Fig. 7-1 will ask you to confirm the removal process. Click **Next**.
- Step 9.** A dialog box (Fig. 7-2) will now prompt you stating that "Ghost Installer successfully removed Contour Shuttle and all its components from your computer. Click on the **Finish** dialog button to exit the uninstallation process."

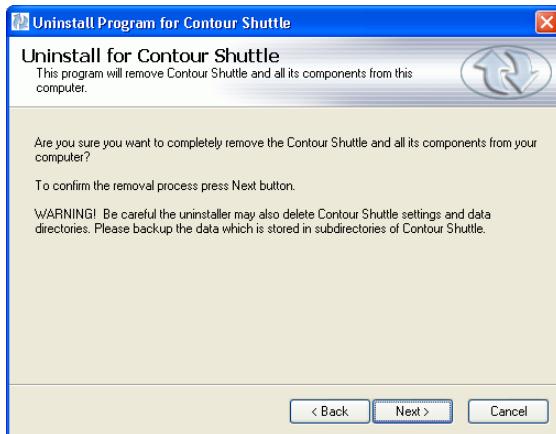


Fig. 7-1

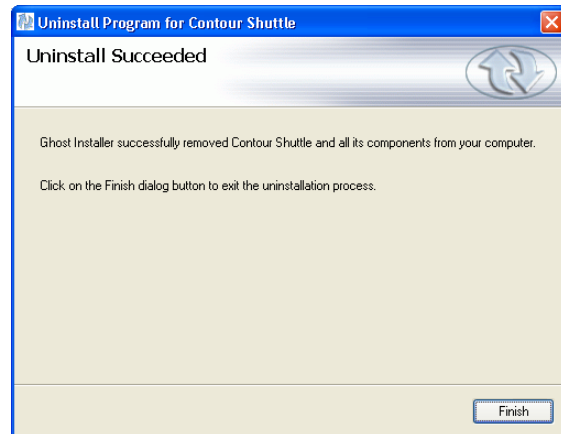


Fig. 7-2

8 Troubleshooting / Frequently Asked Questions (FAQ)

8.1 General topics

Q: I have lost one of the clear button/key caps on my Shuttle device. How can I get a replacement?

A: You can request replacement button/key caps by email or calling our customer support center.

Q: How long of a cable can I use to connect my Shuttle device?

A: The USB specification limits the length of a cable for a low speed device to 3 meters (9 feet 10 inches). For more information about connecting USB devices please check out www.usb.org for current USB specifications

Q: How do you configure the Shuttle device Control Panel so it defaults to a specific application setting, and not the Global Setting that it defaults to every time I open it?

A: The Shuttle device Control Panel is used only to manage your application settings. You do not select the application setting you would like to currently use from the Shuttle device Control Panel. Each application setting is associated (targeted) to the application it supports, and will automatically be enabled when you launch the application.

Q: How to program the keys that are not on my keyboard?

A: You can use the List menu (button below the Keystroke Field) to select special keys.

Q: My Shuttle device Control Panel does not display correctly. All of the images are overlapping and not correct.

A: You will have this problem if your PC is set to use large fonts, please set your system to use small fonts, the Windows default.

Q: Running Windows 98, every time I install the Shuttle device software it removes itself after I reboot.

A: This will happen if you ever previously quit the installer before it was finished installing. You should delete the c:\windows\wininit.ini & wininit.bak files. You will then be able to install the Shuttle device software.

Q: How do I remove the Shuttle device software if the Uninstaller does not work?

A: This is the MANUAL un-installation:

1) Login as administrator (or a user with administrator rights). Be sure the Control Panel is not running.

2) From the command prompt:

a) Go to c:\Windows\System32

b) Type shuttleengine -remove.

This should shut down the engine and helper process. A confirmation box should appear. If the helper process doesn't terminate, terminate it manually from the processes list (ShuttleHelper.exe)

3) Remove c:\Windows\System32\ShuttleEngine.exe and remove the installation directory (default usually is: c:\Program Files\Contour Shuttle).

Now you are ready to install the new version.

8.2 Applications specific topics

Cakewalk Sonar

Q: How do I configure my Shuttle device for Cakewalk Sonar?

A: A control surface module plug-in now directly supports Sonar. There are no. pref settings files needed. Please check our web site for the latest plug-in module and up to date instructions.

Logic

Q: When starting Logic with my Shuttle device and the USB XS Key attached I get an error: "Multiple XSKEYS detected" and the program terminates. I unplug my Shuttle device and Logic loads correctly.

A: 1. Unplug all USB devices, including USB keyboard and your Shuttle device, except the mouse and Logic USB key.
2. Launch Logic with the USB Key and Mouse connected ONLY.
3. With Logic running, connect your Shuttle device and any other USB devices. You now should be able to use the Shuttle device. You only have to do this one time, after this Logic should launch correctly.

Media 100i

Q: The Shuttle device buttons do not work or stopped working with Media 100.

A: You must turn on transport controls within Media 100 software to enable the Shuttle device to function correctly. First, you must have Media 100 launched and it must be the front most window. Second, press "Shift+Num Lock/Clear" to toggle transport controls to On.

ProTools

Q: How do I enable the play head to follow the location you are moving to while moving the Shuttle ring?

A: In ProTools click on the setups pull down menu, and select Preferences. In the Preferences dialog box please turn on or check the following, Timeline insertion follows playback, and edit insertion follows Scrub/Shuttle.

Sonic Foundry Sound Forge 6

Q: My Shuttle device will not work with Sound Forge 6 (factory or customized settings).

A: Try re-targeting the application: from the menu. "Change Target Application" choose the Sound Forge application to associate the setting with the application.

Sonic Foundry Vegas Video 4

Q: How do I get Vegas 4 to shuttle up to 20 times play?

A: To get 20x shuttle, set the "JKL / shuttle speed" preference to "fast" in the Editing page of Vegas 4 preferences. Audio mutes after 4x, but video will shuttle to 20x.

9 Glossary of Terms and Components

Application Settings	Set of Shuttle component assignments for a particular application
Comment Field	Field where to place a brief description about the action associated to a Shuttle component
Computer Response Menu	Choice between actions to associate to a Shuttle component
Dialog Box	Box or sub-window that appears in response to a selection and that requires user-interaction to make one or more decisions
Frequency Menu	To specify how many times you want a command to occur
Jog Wheel	The inner of the two concentric wheels or knobs on the Shuttle device. Rotates 360 deg. In either direction.
Keyboard Shortcut	Keyboard key or combination of keys that perform a function within an application avoiding mouse operations.
Knob	See Shuttle Ring
Options button	Button that allows making changes on a whole setting
Position	Position of the Shuttle Knob, usually associated with an action or command. Zones are points set in intervals along the right and left (clockwise and counterclockwise) sides of the Shuttle Knob. The Shuttle Knob has seven (7) distinct zones in each direction and a rest zone.
Ring	See Shuttle Ring
Shuttle Component	Any programmable feature of the Shuttle device: button, Jog wheel, Shuttle position or transition
Shuttle Ring	The outer black rubberized "ring" of two concentric wheels or knobs on the Shuttle device. It is spring-loaded to improve the "function and feel" of using it. Seven forward and seven backwards positions, as well as transitions between each, and a stop (at rest, centered) position.
Target Application Menu	Menu that stores the application settings list
Transition	Transitions are points in between zones that can be programmed to start, stop, or continue commands. The points can be set up as you turn the Shuttle Knob in either direction. In most cases transitions will not be used unless you have sequential operations to perform.
User Action Menu	To select which Shuttle component to program
Wheel	See Jog Wheel
Zone	See Position

10 Contour Customer Care

This section describes how to register your product, how to obtain technical support from one of our Customer Care representatives.

To **register your Shuttle device**¹, log on to our website <http://www.contourdesign.com/>.

10.1 Technical Support

You may find **answers to your technical problems** in the Troubleshooting section of this guide or in the Frequently Asked Questions (FAQ) section on our website.

You can contact Contour's Customer Care from 9AM through 6PM Monday through Friday EST/EDT 1-800-462-6678 (select Option 2) or 603-893-4556 (select Option 2) International.

Our fax number is 1-603-893-4558 and our support email address is: support@contourdesign.com.

10.2 Warranty Statement

Contour Design, Inc. warrants the ShuttlePRO™ v2, the ShuttlePRO™ and the ShuttleXpress™ against defects in materials or workmanship as defined below:

For a period of TWO YEARS, Contour Design, Inc. will repair or replace the unit, at our option, without charge for parts and labor. After this period you must pay all parts and labor charges.

This LIMITED WARRANTY is extended only to the original purchaser. It does not cover damage or failure caused by Acts of God, abuse, misuse, improper installation or maintenance, or tampering. Please note that this limited warranty does not cover any normal wear and tear or consumable parts, or damage in transit. If the serial number of this product is removed or unreadable, this warranty is null and void.

Should this unit prove to be defective in workmanship or materials, the purchaser's sole rights shall be repair and or replacement, provided by the terms of this warranty. Contour Design, Inc. will not be liable for any damage(s) from the inability to use this product, or any other consequential damages. This warranty gives you specific legal rights. You may also have other rights, which can vary, from state to state. Warranties may also vary by country outside of the United States.

For warranty service or repair, please contact Contour Design, Inc. for a Return Merchandise Authorization (RMA) number. Mark the RMA Number clearly on the package and be sure to write this number down for future use. Please include your contact information and a description of the problems with the returned unit. Then send the unit to

Contour Design, Inc.,
Attn: (RMA number)
10 Industrial Drive,
Windham, NH 03087.

¹ Privacy Statement: Contour Design, Incorporated's strict policy is NOT to sell, rent, or otherwise make available to anyone outside of Contour Design, any information regarding our Customers. We may use the data you provide, however, to announce future Contour Products, including information on subsequent releases of the Shuttle devices Driver Software and/or upgrades and updates to the application settings folder.

Shipments received without an RMA number may be delayed, so be sure to call or e-mail for an RMA number PRIOR to returning the unit.

You can contact Contour's Customer Care from 9AM through 6PM Monday through Friday EST/EDT 1-800-462-6678 (Select Option 2) or 603-893-4556 (Select Option 2) International.

Our fax number is 603-893-4558.

When sending a fax or email to Contour's Customer Care, please clearly write the RMA number and your contact information.

To email us for service or if you have any questions concerning this warranty please email: support@contourdesign.com.

Appendix 1: Example on how to program Global Settings

Below are the steps needed to program Global Settings on the ShuttlePRO by performing the following associations:

- Alt+F4 (close the current window) to Button 13,
- the mouse wheel movement to the jog directions and
- the left and right arrows to the Shuttle positions by varying the frequency.

Step 1

1. Open the Contour Shuttle Control Panel.
2. Click on the Target Application Menu and select Global Settings.

Step 2: programming Button 13

3. Select **Button 13** in the User Action Menu.
4. Select Type Keystroke from the Computer Response Menu.
5. Click in the Keystroke field then press the Alt key and the F4 key. "Alt+F4" should appear in the Keystroke field. Select Once Only in the Frequency Menu.
6. In the Comment field write "Close the current window".

Step 3: programming the Jog directions

7. Select **Jog left** in the User Action Menu.
8. Select Mouse Wheel from the Computer Response Menu.
9. Click on the Up button. Select Once Only in the Frequency Menu.
10. In the Comment field write "Wheel up".
11. Select **Jog right** in the User Action Menu.
12. Select Mouse Wheel from the Computer Response Menu.
13. Click on the Down button. Select Once Only in the Frequency Menu.
14. In the Comment field write "Wheel down".

Step 4: programming the Shuttle positions

Step 4.1 - left positions

15. Select **Shuttle in left 1** in the User Action Menu.
16. Select Type Keystroke from the Computer Response Menu.
17. Click in the Keystroke field then press the left arrow on the keyboard. "Left Arrow" should appear in the Keystroke field.
18. Select 5 Times per Second in the Frequency Menu.
19. In the Comment field write "Left Arrow - 5 t/s".
20. Select **Shuttle in left 2** in the User Action Menu.
21. Select Type Keystroke from the Computer Response Menu.
22. Click in the Keystroke field then press the left arrow on the keyboard. "Left Arrow" should appear in the Keystroke field.
23. Select 10 Times per Second in the Frequency Menu.
24. In the Comment field write "Left Arrow - 10 t/s".
25. Select **Shuttle in left 3** in the User Action Menu.
26. Select Type Keystroke from the Computer Response Menu.
27. Click in the Keystroke field then press the left arrow on the keyboard. "Left Arrow" should appear in the Keystroke field.
28. Select 15 Times per Second in the Frequency Menu.

29. In the Comment field write "Left Arrow - 15 t/s".
30. Select **Shuttle in left 4** in the User Action Menu.
31. Select Type Keystroke from the Computer Response Menu.
32. Click in the Keystroke field then press the left arrow on the keyboard. "Left Arrow" should appear in the Keystroke field.
33. Select 30 Times per Second in the Frequency Menu.
34. In the Comment field write "Left Arrow - 30 t/s".
35. Select **Shuttle in left 5** in the User Action Menu.
36. Select Type Keystroke from the Computer Response Menu.
37. Click in the Keystroke field then press the left arrow on the keyboard. "Left Arrow" should appear in the Keystroke field.
38. Select 45 Times per Second in the Frequency Menu.
39. In the Comment field write "Left Arrow - 45 t/s".
40. Select **Shuttle in left 6** in the User Action Menu.
41. Select Type Keystroke from the Computer Response Menu.
42. Click in the Keystroke field then press the left arrow on the keyboard. "Left Arrow" should appear in the Keystroke field.
43. Select 60 Times per Second in the Frequency Menu.
44. In the Comment field write "Left Arrow - 60 t/s".
45. Select **Shuttle in left 7** in the User Action Menu.
46. Select Type Keystroke from the Computer Response Menu.
47. Click in the Keystroke field then press the left arrow on the keyboard. "Left Arrow" should appear in the Keystroke field.
48. Select As Fast As Possible in the Frequency Menu.
49. In the Comment field write "Left Arrow - fastest".

Step 4.2 - centered position

50. Select **Shuttle centered** in the User Action Menu.
51. Verify that the Computer Response Menu is set to Do Nothing.

Step 4.3 - right positions

52. Select **Shuttle in right 1** in the User Action Menu.
53. Select Type Keystroke from the Computer Response Menu.
54. Click in the Keystroke field then press the right arrow on the keyboard. "Right Arrow" should appear in the Keystroke field.
55. Select 5 Times per Second in the Frequency Menu.
56. In the Comment field write "Right Arrow - 5 t/s".
57. Select **Shuttle in right 2** in the User Action Menu.
58. Select Type Keystroke from the Computer Response Menu.
59. Click in the Keystroke field then press the right arrow on the keyboard. "Right Arrow" should appear in the Keystroke field.
60. Select 10 Times per Second in the Frequency Menu.
61. In the Comment field write "Right Arrow - 10 t/s".
62. Select **Shuttle in right 3** in the User Action Menu.
63. Select Type Keystroke from the Computer Response Menu.
64. Click in the Keystroke field then press the right arrow on the keyboard. "Right Arrow" should appear in the Keystroke field.
65. Select 15 Times per Second in the Frequency Menu.

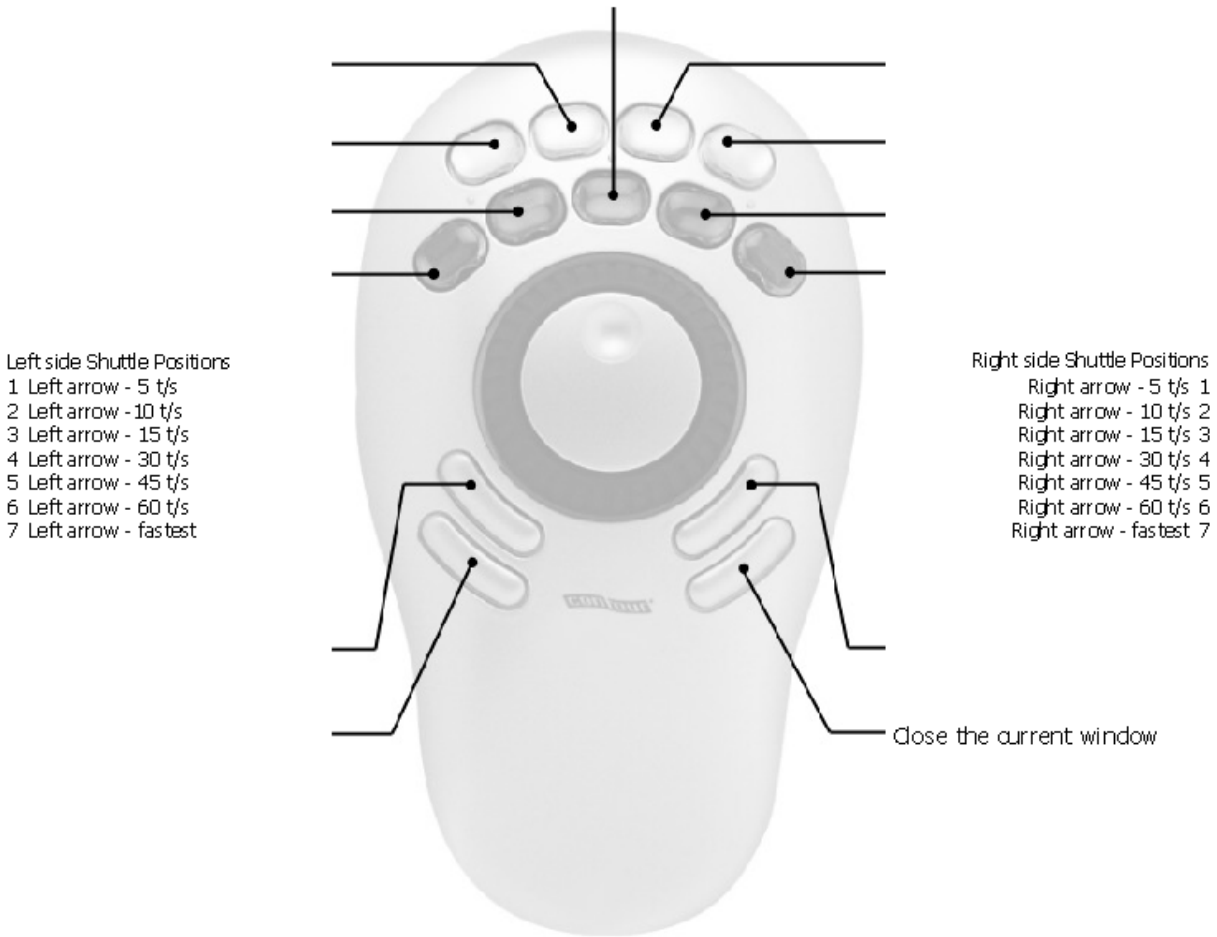
66. In the Comment field write "Right Arrow - 15 t/s".
67. Select **Shuttle in right 4** in the User Action Menu.
68. Select Type Keystroke from the Computer Response Menu.
69. Click in the Keystroke field then press the right arrow on the keyboard. "Right Arrow" should appear in the Keystroke field.
70. Select 30 Times per Second in the Frequency Menu.
71. In the Comment field write "Right Arrow - 30 t/s".
72. Select **Shuttle in right 5** in the User Action Menu.
73. Select Type Keystroke from the Computer Response Menu.
74. Click in the Keystroke field then press the right arrow on the keyboard. "Right Arrow" should appear in the Keystroke field.
75. Select 45 Times per Second in the Frequency Menu.
76. In the Comment field write "Right Arrow - 45 t/s".
77. Select **Shuttle in right 6** in the User Action Menu.
78. Select Type Keystroke from the Computer Response Menu.
79. Click in the Keystroke field then press the right arrow on the keyboard. "Right Arrow" should appear in the Keystroke field.
80. Select 60 Times per Second in the Frequency Menu.
81. In the Comment field write "Right Arrow - 60 t/s".
82. Select **Shuttle in right 7** in the User Action Menu.
83. Select Type Keystroke from the Computer Response Menu.
84. Click in the Keystroke field then press the right arrow on the keyboard. "Right Arrow" should appear in the Keystroke field.
85. Select As Fast As Possible in the Frequency Menu.
86. In the Comment field write "Right Arrow - fastest".

Step 5: confirming changes

87. Click on the **Apply** button.

Step 6: exporting Global settings info

88. Click on the **Options** button.
89. Select Export settings info from the list.
90. Type Global Settings as name of the file and choose the desktop as destination folder.
91. Click on **Save**.



Step 7: using Global Settings

92. Click on the Start Menu in the lower left corner of your screen.
93. Select Programs and then Accessories from the submenu.
94. Click on Notepad.
95. Open a .txt file.
96. Turn the Jog and Shuttle to move across the text.
97. Press Button 13 when you are done.